

WebACM

Web Advanced Central Monitoring

SYSTEM DESCRIPTION

WebCM System

With the help of WebCM system the central battery system can be centrally controlled in the network, regardless of the location. The system includes a Web module, which is connected in the central battery system. Each central battery system has an IP address and a normal web browser functions as the user interface.

In its basic form, the system displays the status of the central battery panel and the connected luminaires, as well as the test log book. The user may also run luminaire and battery tests.

WebCM is available for addressable central battery systems in TKX65, TKX66 and TKX67 series. The system does not require a separate software, a PC or a multimedia device with a web browser is sufficient.

WebACM Software

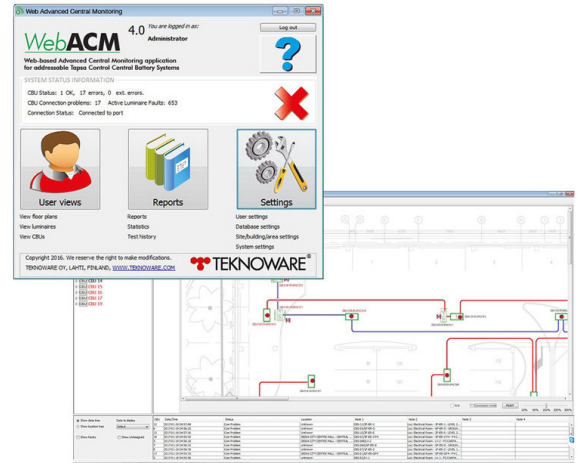
WebACM is an additional software for the WebCM system. It functions via Ethernet TCP/IP.

WebACM software enables the placement of luminaires and central battery systems on the buildings layout drawing.

WebACM needs Java supported software and PC with Internet connection. In fault situations, WebCM and WebACM send a notification automatically to e-mail addresses specified by the user. Both can control centrally several addressable central battery systems and addressable luminaires.

Both include control of tests, test log, central battery system status, various user levels and the login with a user name and password.

WebACM system can be connected to a BACnet building automation system.



Product Code	Product Description
TST5161	WebACM Software
TST5181	WebACM Software BACnet Interface (max. 30 central battery panels)
TST5142	BACnet interface (always to the next group 30 central battery panels)

Product Code	Product Description	For
TST6724	WebCM/WebACM Interface	TKX67xxC
TST6624	WebCM/WebACM Interface	TKX66xxC
TST6524	WebCM/WebACM Interface	TKX65xxC

