

IntelliPanel



64
Devices
per loop



The IntelliPanel touch panel is a DALI emergency lighting test and monitoring system. Multiple IntelliPanel panels can be networked together to monitor larger DALI systems.

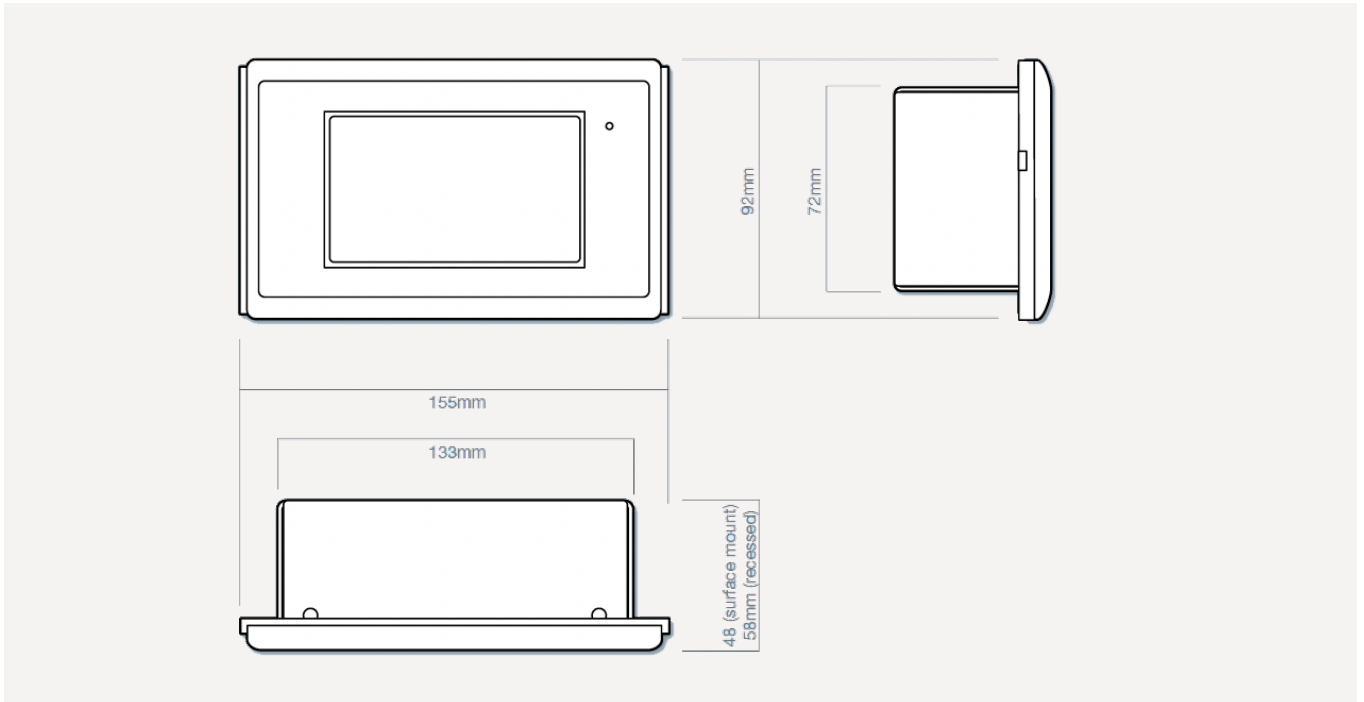
The control panel operates without the need for permanent connection to a PC.

Reports may be viewed and printed using IntelliPanel software and remote access is possible through Ethernet connection.

Key features:

- Easy to install and maintain
- Touch-screen user interface
- 128 DALI addresses via two DALI circuit
- Max. 8 gateways can be connected to 1 DALI circuit
- Can monitor up to a max. of 1024 Luminaires by adding gateways
- Integrated network and power connections
- Integrated long-life CR2032 battery
- Recessed and surface-mount housings available
- Ethernet port for commissioning and networking
- Configured using Intelli software
- Password-protected engineering mode
- View and print reports using Intelli software
- Compatible with all ESCALUX DALI emergency products
- Auto power save mode

Dimensions

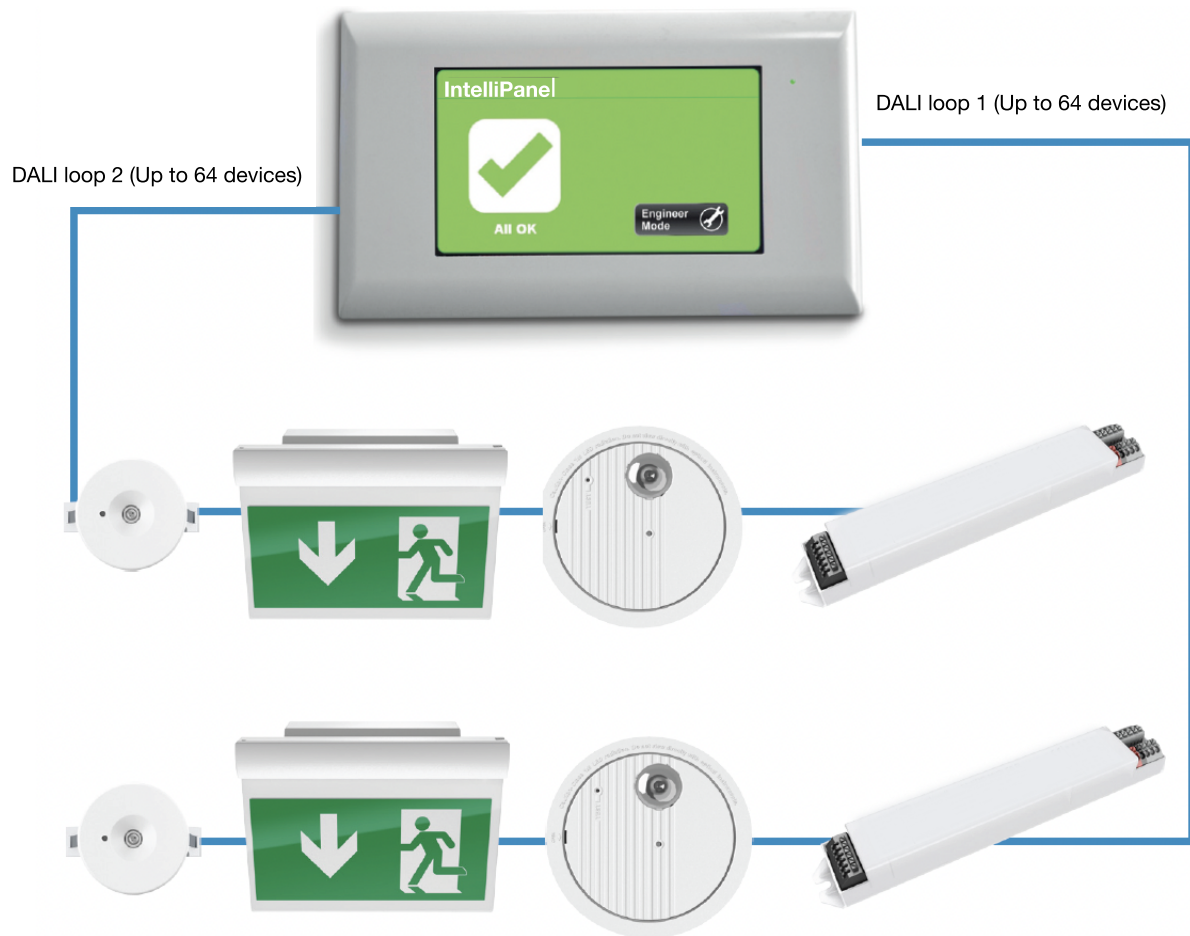


Specification

Rated voltage	: 230V
Supply frequency	: 50/60Hz
Power	: 4.1W
Screen	: 4.3" resistive touch-panel 24-bit, 16 million color LCD
Resolution	: 480 x 272 pixels
Backlight	: LED
Data transfer	: Ethernet TCP/IP
Memory	: 4-year test log
Internal battery	: CR2032 lithium coin cell (replaceable)
Temperature range	: 0°C to +50°C
Weight	: 310g
Installation options	: Surface/ Recessed mounted

Outputs

2 x DALI loops	: Maximum of 64 devices per loop
Current	: 250mA



Order Codes

ESCP	IntelliPanel V1.5 Kit
ESCGATE	DALI Gateway for network extension
ESC - RE	DALI repeater for extension of DALI line
ESC - BI	BMS interface
ESC - FI	Fire alarm interface